

The Use of Science for Fisheries Restoration in the Huron-Erie Corridor



Bruce Manny, Edward Roseman, Gregory Kennedy, James Boase, Rose Ellison, Dave Bennion, and Jennifer Read

NCER, Chicago, IL, July 31, 2013

Acknowledgements / Partners



- BASF Corp.
- Department of Fisheries and Oceans, Canada
- DTE Energy
- Essex Region Conservation Authority
- Great Lakes Fishery Commission
- JJR LLC
- Michigan DNR
- Michigan Sea Grant
- Michigan Wildlife Conservancy
- National Atmospheric and Oceanic Administration
- Ontario Ministry of Natural Resources
- University of Michigan
- U.S. Army Corps of Engineers
- U.S. EPA Great Lakes Program Office
- U.S. Fish and Wildlife Service
- U.S. Geological Survey
- Walpole Island First Nation



USGS/USFWS Science Support Program

Lake Sturgeon Facts

- **Largest fish in the Great Lakes.**

- **They can live 120+ yrs.**

- **They have been known to reach 2.5 meters in length and weigh between 45 and 140 kg.**

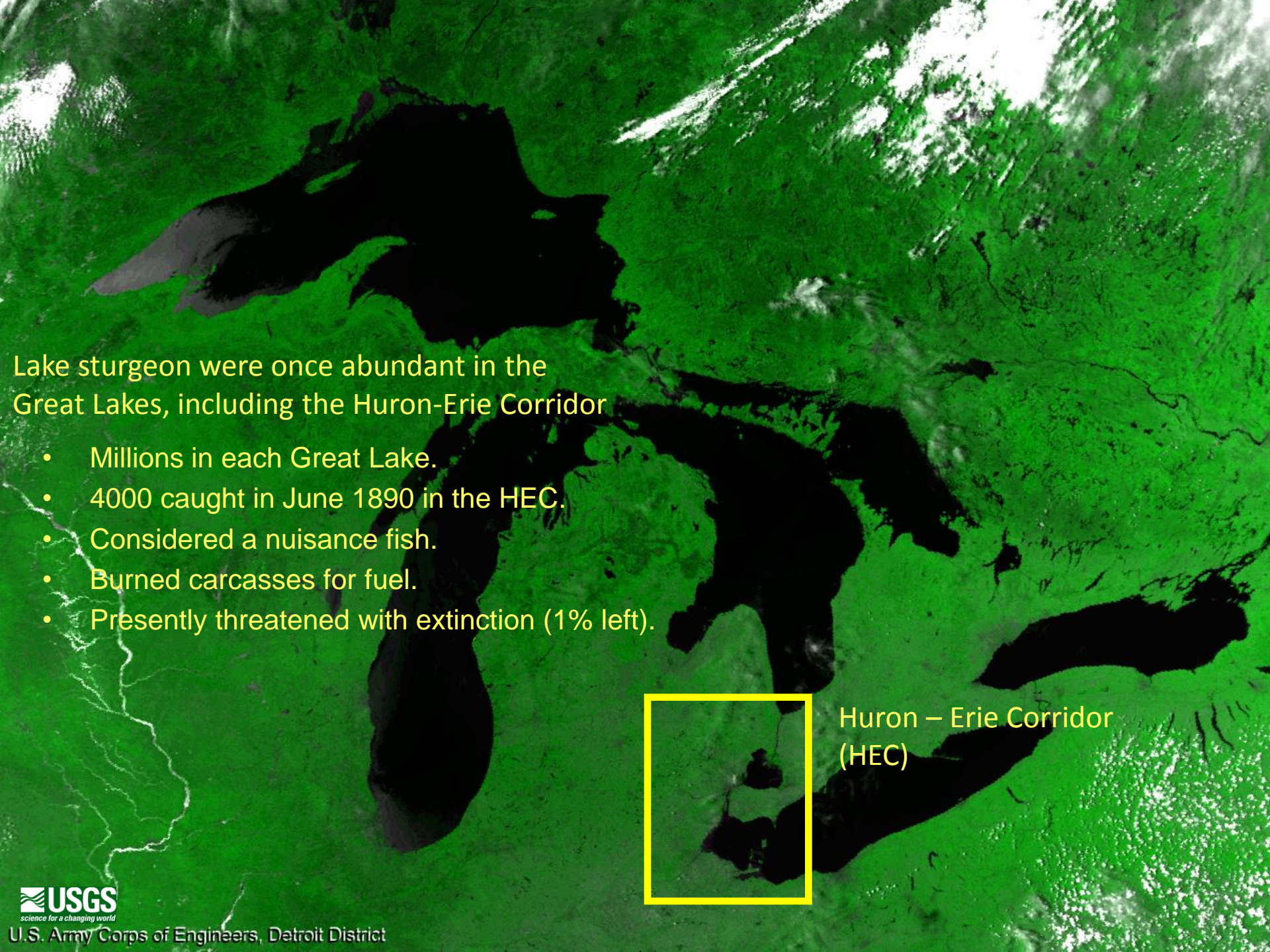
- **Spring spawner at water temperatures of 9-16° C.**

- **Seek out fast moving, well oxygenated water and coarse rock rubble.**

- **They take 15-20 years to reach sexual maturity.**

- **Females spawn once every 4-7 years.**





Lake sturgeon were once abundant in the Great Lakes, including the Huron-Erie Corridor

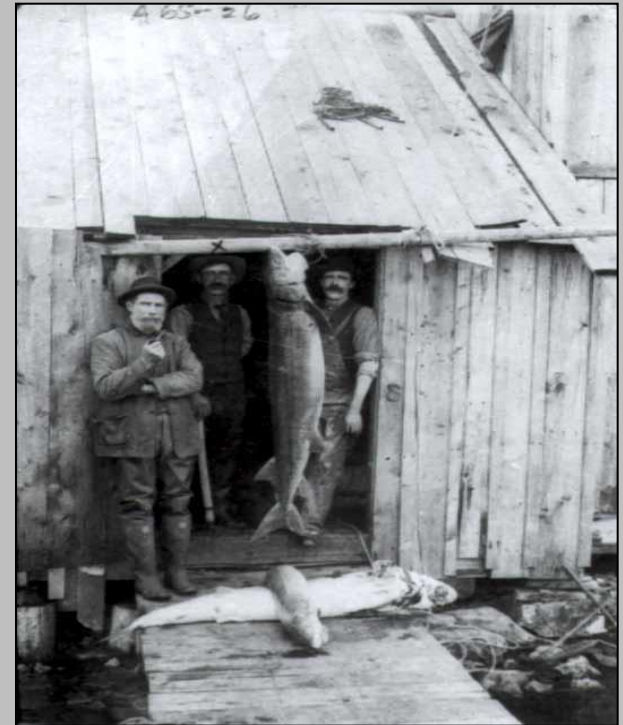
- Millions in each Great Lake.
- 4000 caught in June 1890 in the HEC.
- Considered a nuisance fish.
- Burned carcasses for fuel.
- Presently threatened with extinction (1% left).

Huron - Erie Corridor (HEC)

Millions Were Caught

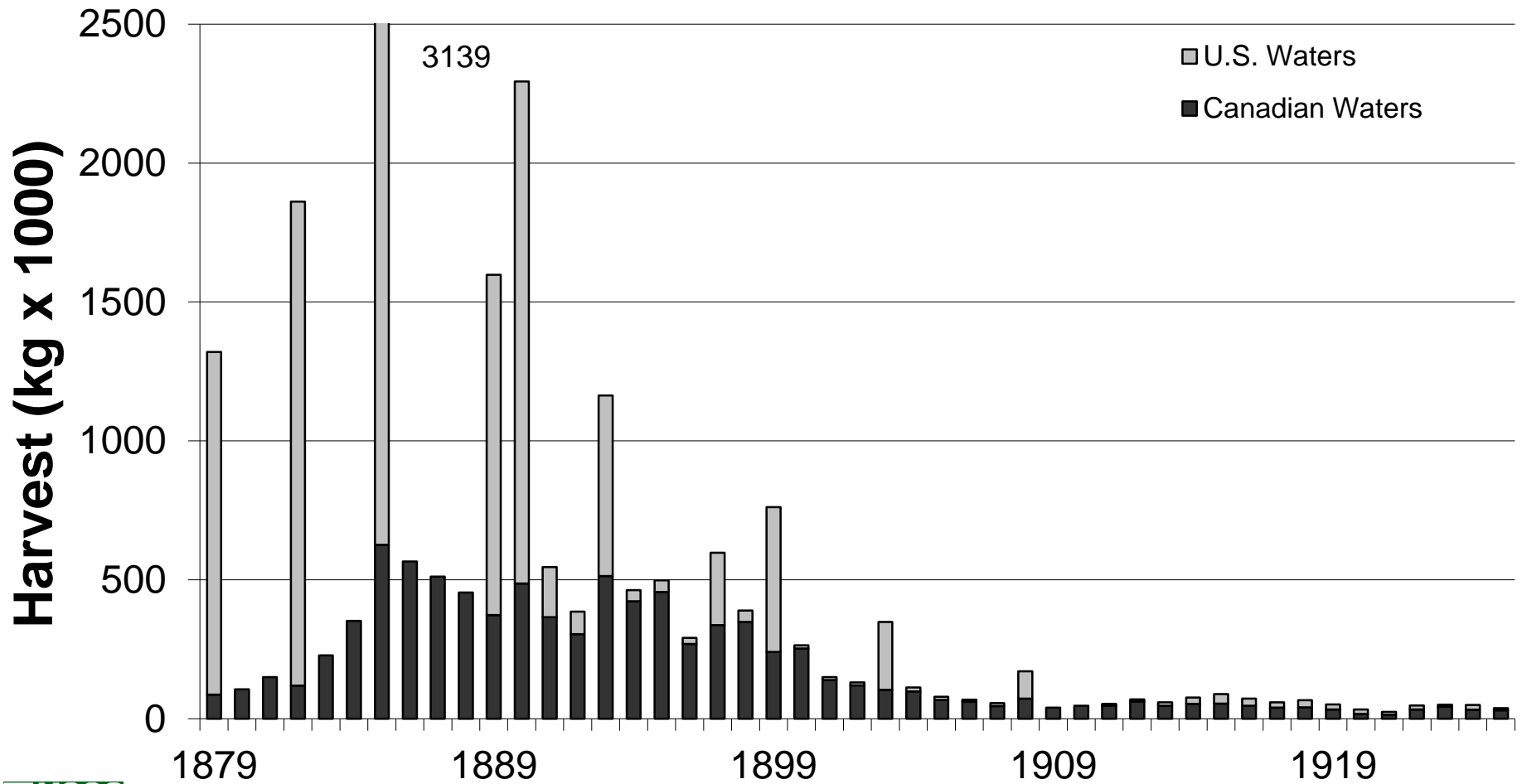


**Massive overfishing for
flesh, oil & eggs**



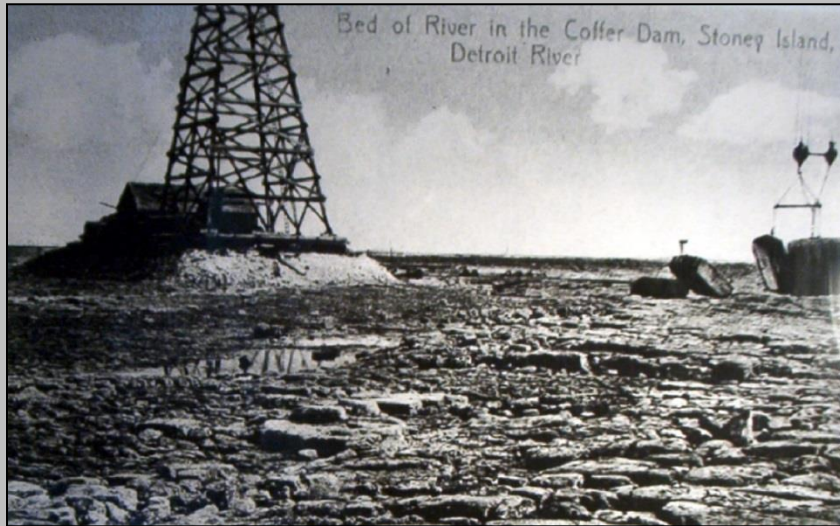


Lake Sturgeon Annual Harvest



Spawning Areas Removed

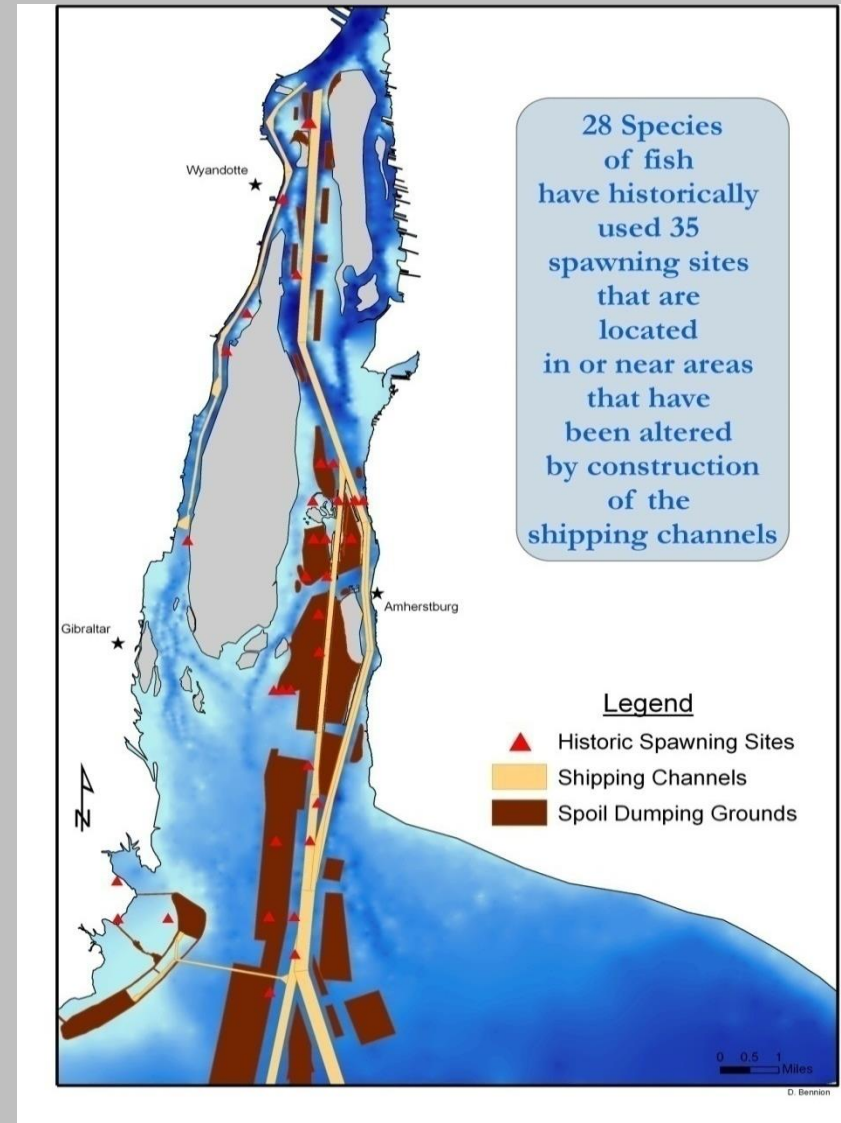
Before: Natural River Bottom



During Construction



Present Day Lower Detroit River



Number of Sturgeon in the Central Great Lakes Today

| | Population Estimates * | Lower CI | Upper CI |
|---------------------|------------------------|----------|----------|
| Southern Lake Huron | 35,484 | 25,939 | 45,030 |
| North Channel, SCR | 11,720 | 7,356 | 16,083 |
| Detroit River | 4,068 | 869 | 7,268 |

*J. Chiotti, et al., ISS7 presentation

Existing Spawning Habitat

- In 2001, only 3, small, sturgeon spawning grounds were known in the HEC: Blue Water Bridge, Mazlinka's Reef in SCR and, Zug Island in DTR
- Of these only Blue Water Bridge is naturally occurring. The other two were manmade.



1. Conceptualize

- Define initial team
- Define scope, vision, targets
- Identify critical threats
- Complete situation analysis

2. Plan Actions and Monitoring

- Develop goals, strategies, assumptions, and objectives
- Develop monitoring plan
- Develop operational plan

3. Implement Actions and Monitoring

- Develop work plan and timeline
- Develop and refine budget
- Implement plans

4. Analyze, Use, Adapt

- Prepare data for analysis
- Analyze results
- Adapt strategic plan

5. Capture and Share Learning

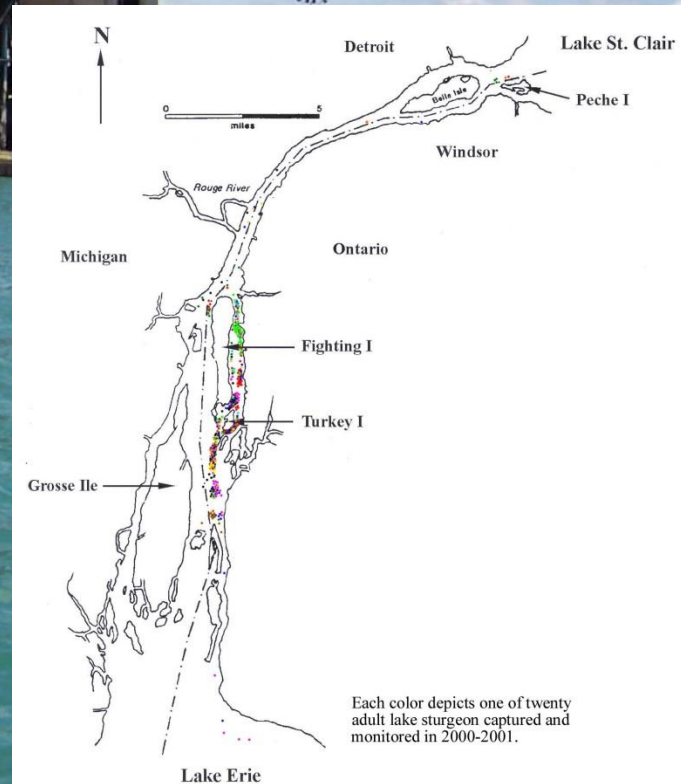
- Document learning
- Share learning
- Create learning environment

**Conservation
Measures
Partnership
Open Standards**

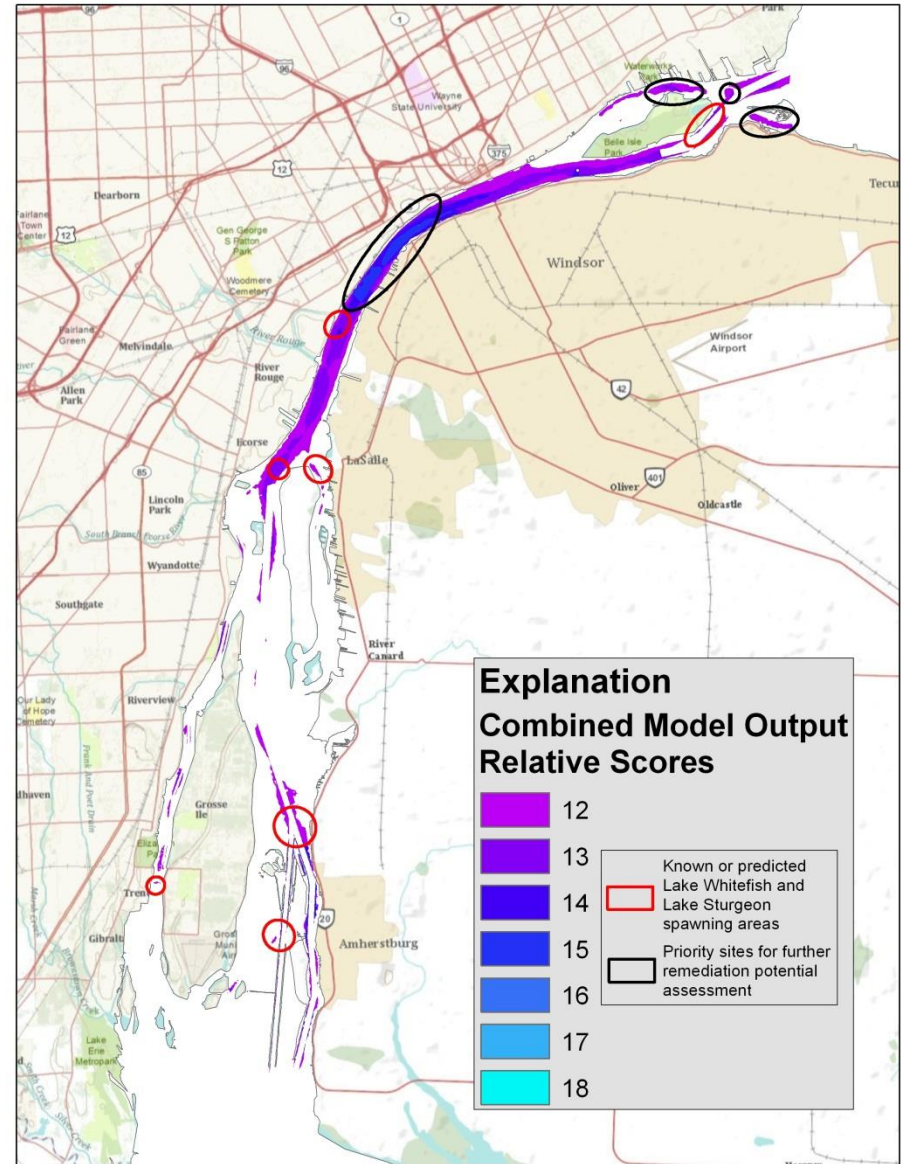
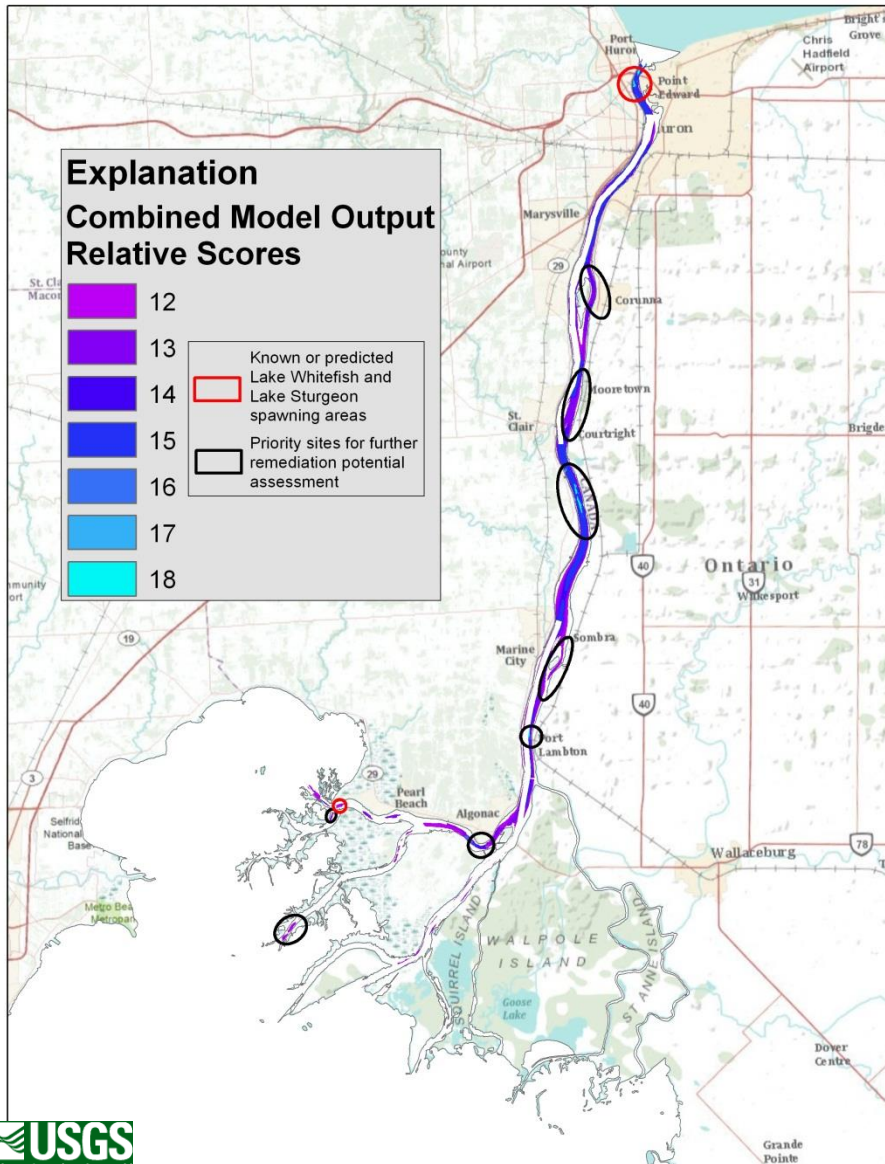
Zug Island Steel Mill, Detroit River



Egg mat



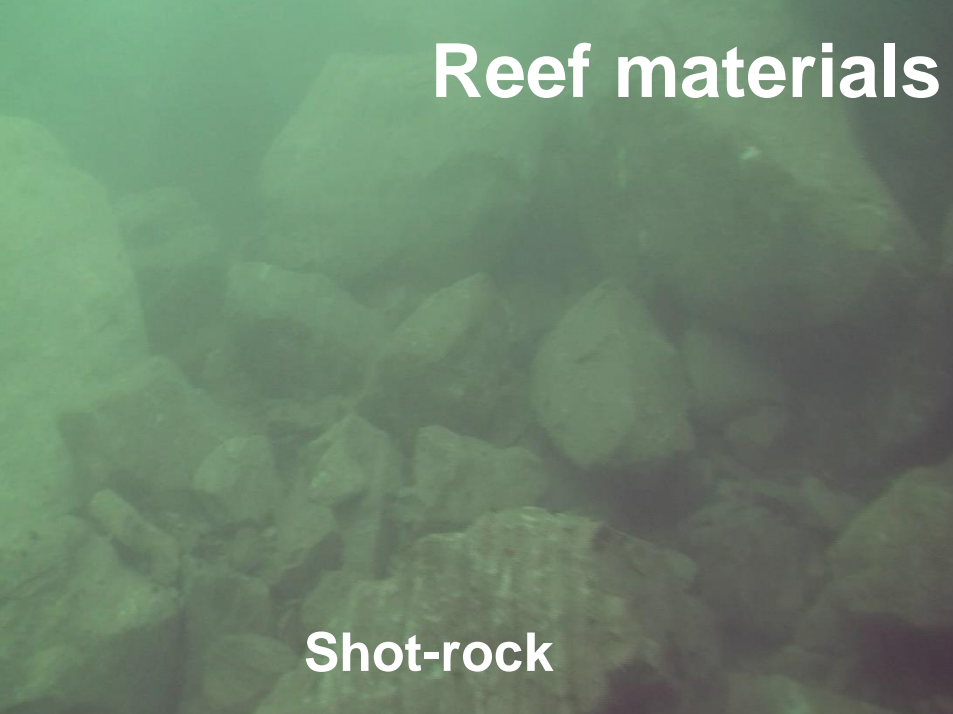
Bennion-Manny Model



GPS-guided rock placement



Reef materials used included:



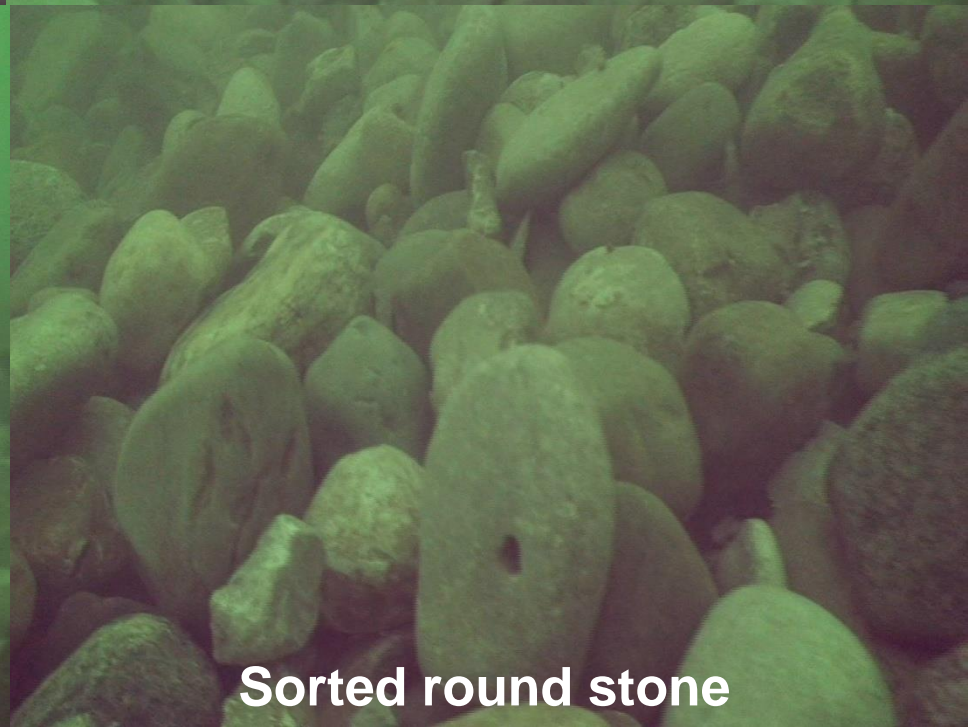
Shot-rock



Sorted limestone



Mix



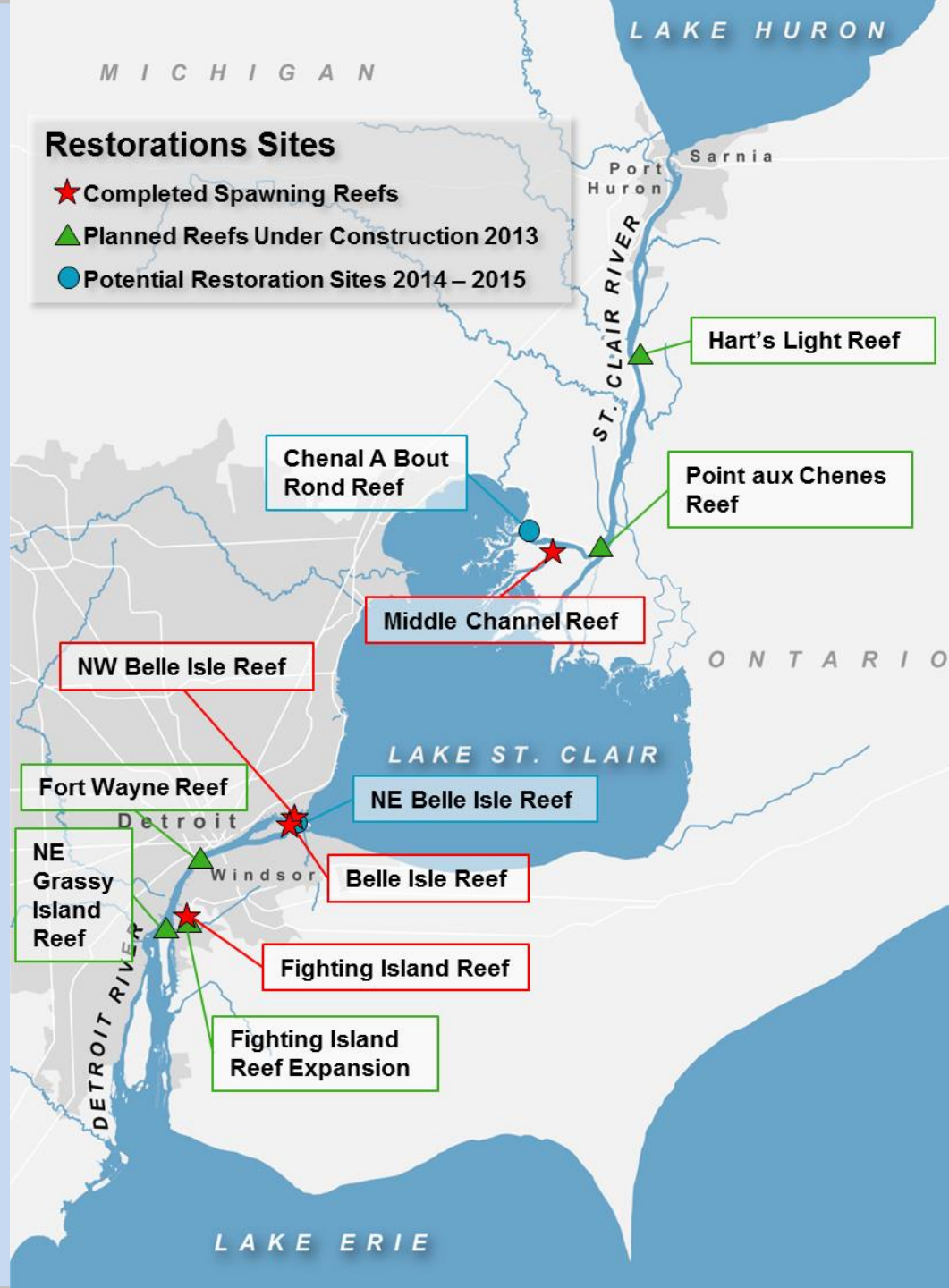
Sorted round stone



Planned Reef Construction

Seven new spawning sites in the 160 km channel by 2016.

Newer reefs are larger than early experimental reefs (1.2 to 1.6 hectares each).





**We expect the HEC to be the epicenter
of sturgeon restoration in the Great
Lakes.**